

The new
TUCSON



The Unsurpassed

The design of the Tucson is not only attractive to look at, but also functional. Equipped with state-of-the-art powertrain, the elegantly designed exterior underlines its sporty look. The ergonomic interior design has been enhanced by best quality leather finish. Tucson provides seamless connectivity and is equipped with latest technology to make driving comfortable and the journey to your destination easier.



The Hyundai Tucson

Our new compact SUV is a big step forward for the Hyundai brand globally. The Tucson has a bold and athletic presence achieved through refined, flowing surfaces, bold proportions, sharp lines and most importantly, our brand signature element – the hexagonal grille.

The Tucson is designed and engineered to impress with its bold looks, cutting-edge technologies and rewarding drive ability.



Unparalleled Confidence

The Tucson's captivating exterior is mainly defined by 18-inch Alloy wheels and modern LED headlights, which underlines its sporty look and follows the cascading radiator grille. The overall look of the car is enhanced by LED rear lights and a rear bumper and is ready to dazzle everyone with class, clearly cut body lines and balanced proportions.





An Elegant Performer

The Tucson stands out with its distinctive appearance, uniquely sculptured lines and balanced proportions. The dominant side character lines connects the headlights to the rear taillights which exudes a dynamic appeal.

Discover the Tucson

With a bold fusion of athletic design, advanced technology and assistance systems, the Hyundai Tucson is a compact SUV that you've always wished for.



Motionless Smart Tailgate System

Automatic Tailgate System in Tucson offers easy loading and unloading. The tailgate automatically opens as the driver approaches the rear door and the smart key is detected for 3 seconds. The height of the tailgate is adjustable to suite your space.





Impeccable Interior

The Tucson's interior exceeds expectations with a fresh accent that makes it even more comfortable and spacious. Premium leather upholstered dashboard with double stitching evokes a premium feel. Tucson is equipped with state-of-the-art technology to make your travels more comfortable.



Panoramic sunroof

The front and rear passengers can catch every rainbow, sunrise and sunset.

10.1” Floating Infotainment System

It plays various types of media and can transfer the contents of your smartphone to the screen using Android Auto™ functions.

Android Auto™ is a registered trademark of Google Inc.
* Radar alerts are not available in all countries.

Phone mirror link function

For one-time only Initial Setup Android Device:

- Turn Bluetooth on in your Android Phone.
- Tap Bluetooth on Home Screen.
- Tap to search for your device and select it.
- On your Android Phone, confirm pairing with Car AVN.



Android Phone by USB

For an effective wireless connection between Smart Phone and Car navigation system (AVN):

- Connect your phone with USB cable.
- Download 'Easy Connection' App from Google Play Store or Scan the below QR Code to install app. (As shown in picture below)

Download "Easy Connection" app from Google Play Store or Scan the below QR Code and install. (As shown in picture below)



Spacious and distinctive

Attention is paid to every detail, making the interior of the Tucson, absolutely exceptional. The ergonomic interior design has been enhanced by softened materials and refined colour schemes.

Interior style

To offer a phenomenally luxurious and comfortable experience, we have provided the Tucson with a unique coloured interior to compliment your personality.



Ample Luggage Space

The Tucson offers the largest luggage volume in its class. The 513 liters capacity can be expanded to 1,503 liters by folding down the rear seats.



60:40 Folding rear seats

Spacious and flexible Tucson has a generous trunk volume of 513 liters. The configuration of the luggage compartment is easily adjustable - in a few seconds you can fold down the rear seats, which are in a ratio of 60:40. With the seats folded down, the luggage compartment volume increases to 1,503 liters. For greater passenger comfort, the angle of the rear seat backrests can be adjusted.



Including luggage screen



Rear seats folded 40%



Rear seats folded 60%



Rear seats folded

THE NEW TUCCSON



HTRAC All-Wheel Drive



HTRAC is an electronic all-wheel drive system that automatically detects vehicle's speed and road conditions to control braking between the left and right wheels and apply active torque control between the front and rear axles, in order to ensure stability while driving and cornering on slippery roads.

Performance

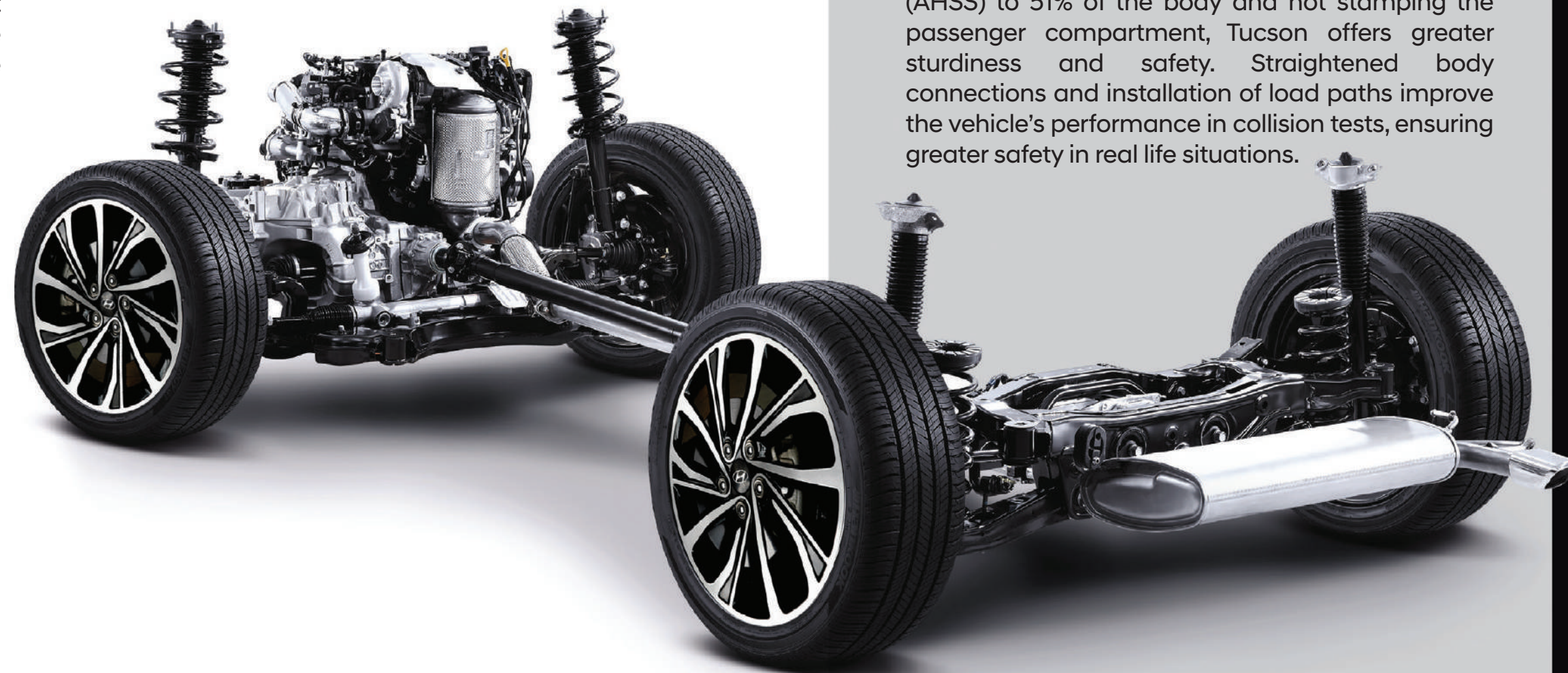
The Tucson is equipped with state-of-the-art powertrain that produces low levels of CO2 and meets the latest Euro2 Temp emissions standard.

2.0 MPi Gasoline Engine

155 Maximum Power
HP/6,200 rpm

196 Maximum Torque
N-m /4,000 rpm

•6-speed Automatic Transmission •EU2



Advanced High Strength Steel (AHSS)

By increasing use of Advanced High Strength Steel (AHSS) to 51% of the body and hot stamping the passenger compartment, Tucson offers greater sturdiness and safety. Straightened body connections and installation of load paths improve the vehicle's performance in collision tests, ensuring greater safety in real life situations.



Dual SRS Airbags

The driver and passenger seats's airbag protect passengers in the event of collision.



Class leading safety innovations

Advanced driving technologies applied to the Tucson are based on rigorous safety measures you can always rely on.



Dual Airbags



Downhill Brake Control



Anti-Lock Braking System



Hill-Start Assist Control



Puddle Lamps



ECM with Compass



Dynamic Parking Guidelines



4.2" TFT Supervision Cluster



10.1" Floating Infotainment System



Cooled Glove Box



Full Chrome Door Handles



Wireless Phone Charging Dock



Full LED Static Bending & Auto-Leveling Head Lamps

Class leading features

Exuberant Exterior



LED Daytime Running Lights (DRL)



LED Outside Mirror Repeaters



Chrome-Coated Outdoor Handles



Safety Power Window (Driver's seat only)



Smart Tailgate System



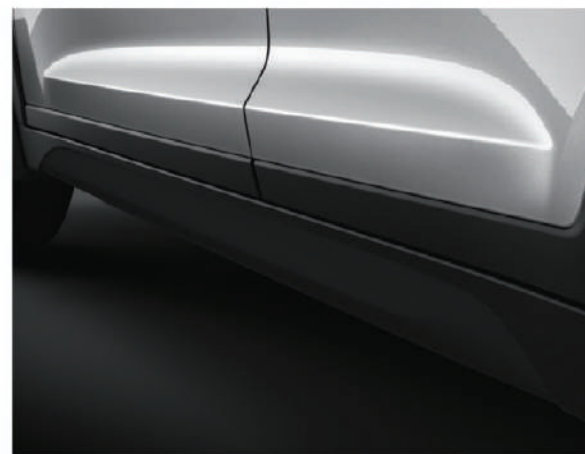
Puddle Lamps



Panoramic Sunroof



Chrome-Coated Beltline



Side Garnish



LED High-Mounted Stop Lamp



Full LED Tail Lights



Welcome Lights

Impeccable Interior



Rolling Boot Cover



Hands-Free Smart Tailgate



Push Start Button



Steering Wheel with Multimedia



Auto Light Control



Traction Control & Differential Lock



Electrically Adjustable Seats



Rear Console (USB Charger)



6 Speed Automatic Transmission with Sequential Mode



Automatic Window & Central Locking



Premium Leather Seats



Reclining Rear Seats



Sun Glasses Holder & Room Light



Full Auto Dual Zone Air Conditioning System



Ventilation for Rear Seats



Wireless Phone Charging Dock



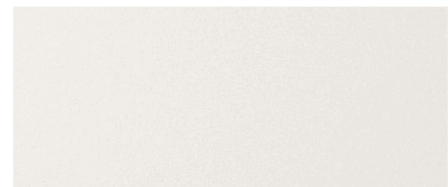
Electronically Controlled Parking Brake



Connection (AUX and USB)



Exterior colours



Polar White



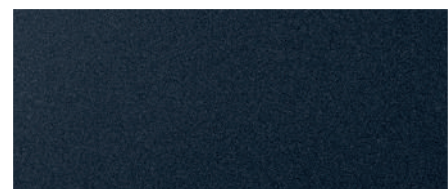
Black Diamond Metallic



Silver Metallic



Graphite Grey Metallic



Oxford Blue



Fiery Red

* Aforementioned colours are subject to availability and product model/range.
* The colour plates shown may vary from the actual colours due to the limitations of printing process.



Specifications

Variant		FWD A/T GLS Sport	AWD A/T Ultimate	
Dimensions	Body Type	SUV		
	Exterior L x W x H (mm)	4480 x 1850 x 1660		
	Wheelbase (mm)	2670		
	Ground Clearance (mm)	172mm		
	Number of Doors	5 doors		
	Seating Capacity	5 persons		
	Number of Seating Rows	2 rows		
Engine	Fuel Type	Petrol		
	Displacement (cc)	1999		
	Max Power HP / rpm	155/6200		
	Max Torque N-m / rpm	196/4000		
	Engine Type	16-Valve		
	Cylinders	In-Line 4-Cylinder		
	Compression Ratio	10.6 : 1		
	Fuel System	MPi		
	Fuel Tank Capacity (l)	62		
	Drive Type & Transmission	Transmission	6-Speed A/T	
Drive Mode Select - A/T Only		●		
Wheel & Tire	Wheel Type	Alloy Wheel		
	Wheel Size	18"		
	Tyre Size	225/55 R18		
	Spare Tyre	Wheel & Tire	Full Size	
		Wheel Type	Alloy Wheel	

*Specifications may vary without prior notice

**Terms & Conditions Apply

Specifications

Features		FWD A/T GLS Sport	AWD A/T Ultimate
Suspension	Front	MacPherson Strut	
	Rear	Multi-Link + HPD-PLD Type	
Steering Wheel	Steering Wheel	Material	4-Spoke Leather
		Power Steering	Electric
		Adjustment	Tilt & Telescopic
	TGS Knob	Leather	
Air Bags	Driver	●	
	Passenger	●	
Brake	Brake	Front	16" Disc
		Rear	16" Disc
	Anti-Lock Braking System (ABS)		●
	Vehicle Stability Management		●
	Brake Assist (BA)		●
	Electronic Stability Control (ESC)		●
	Downhill Brake Control (DBC)		●
	Hill-Start Assist Control (HAC)		●
	Electronic Parking Brake (EPB)		●
	Roof	Panoramic Sunroof - Power One Touch Safety + Roof Rails	
ECM + Compass		●	
Illumination		●	
Interior Trim	C / Pad Upper Leather Garnish (Artificial Leather)		●
	Luggage Net		●
	Luggage Screen		●

Specifications

Variant		FWD A/T GLS Sport	AWD A/T Ultimate
Locking System	Hands Free Power Tailgate System	X	●
	Smart Key w/ Button Start & Burglar Alarm		●
Exterior	Chrome Coating + O/S Door Chrome Handle		●
	Roof Rail		●
	Mud Guard - Frt + Rr		●
	Body Color		●
	Side Repeater Lamp (Driver & Pass)		●
	Electronic Folding Control (Driver & Pass)		●
	Electronic Convex w/ Heated (Driver & Pass)		●
	Puddle Lamp		●
	Door Belt Line Chrome Molding		●
	Upper Trim Finishing		
- TPO (Fr + Rr)		●	
Center Trim Finishing			
- TPO (Fr + Rr)		●	
Auto Up & Down + Safety Window (Driver)		●	
Chrome Garnish on switch (All Doors)		●	
Instrumental Panel & Console	Ash Tray & Cigar Lighter w/ Illumination (Frt)		●
	Cooling Function		●
AVN	Rear USB 1EA		●
	10.1" Display Audio + Shark Fin Antenna + Android Auto + Autolight Control		●
	Wireless Charger		●
	Bluetooth + Steering Wheel Remote		●
	6-Speakers: FR/RR/Tweeter		●

- The above values are results from internal testing and are subject to change after validation.
- Some of the equipment illustrated or described in this catalog may not be supplied as standard equipment and may be available at extra cost.
- Hyundai Motor Company reserves the right to change specifications and equipment without prior notice.
- The color plates shown may vary slightly from the actual colors due to the limitations of the printing process.
- Please consult your dealer for full information and availability on colors and trims.

*Specifications may vary without prior notice

**Terms & Conditions Apply

Specifications

Features		FWD A/T GLS Sport	AWD A/T Ultimate
Seat	Fabric	●	X
	Pure Leather	X	●
	Power Seat		
	- Driver (8way) + Lumbar Support (2way)	●	X
	- Driver (8way) + Lumbar Support (2way) & Passenger (8way)	X	●
Lighting	Head Lamp		
	Dedicated LED D.R.L + Bumper Black Moulding		●
	Full LED Head Lamp w/ LED Static Bending + Auto Leveling Device		●
	FR Fog Lamp - Conventional		●
	LED Type		●
	Personal Lamp		●
Instrument	Super Vision (4.2" TFT LCD)		●
	Auto Light Control		●
Comfort & Safety	Immobilizer		●
	Dynamic Guideline Camera		●
	Auto Cruise Control		●
	Air Conditioner		Dual Zone Automatic Climate Control
HVAC	Auto Defogger		●
	Rear AC Ventilation		●
	Wiper		●
	Front		●
	Rear		●



WheelTread* 1,604

Overall Width 1,850



Wheel Base 2,670

Overall Length 4,480

Overall Height
(Including roof rail)

1,655 (1,660)



WheelTread* 1,615

Unit : mm * 18" Alloy Wheel (Front/Rear) : 1,608/1,620

About Hyundai Nishat Motor (Private) Limited

Hyundai Nishat Motor (Private) Limited (Hyundai Nishat), a Nishat Group company, is a joint venture among three leading international businesses; Nishat Group, Sojitz Corporation (Japan) and Millat Tractors Ltd. Hyundai Motor Company (Korea) has partnered with Hyundai Nishat for the manufacturing, marketing and distribution of Hyundai's product line in Pakistan. Hyundai Nishat aspires to be amongst the leading auto manufacturers in Pakistan in the coming years to align its track record with other sister concerns of the Nishat Group. Our vision is to become the most "valued" automobile brand and recreate the global success of Hyundai in Pakistan.

Since our inception in 2017, we are rapidly establishing our 3S distribution network across the country through our partner franchisees. Our manufacturing plant, being set up in the largest industrial estate of Pakistan avows world class precision with the deployment of the most advanced production techniques.

For more information, please contact:
info@hyundai-nishat.com
dealership@hyundai-nishat.com



Hyundai Nishat Motor (Private) Limited.

1-B, Aziz Avenue, Canal Bank Road, Gulberg V, Lahore
Phone +92-42-111 111 466, www.hyundai-nishat.com
info@hyundai-nishat.com

    [hyundaipakistan](https://www.youtube.com/hyundaipakistan)

4 YEAR
OR 100,000 km
WARRANTY

*Whichever comes first
**Terms and conditions apply

